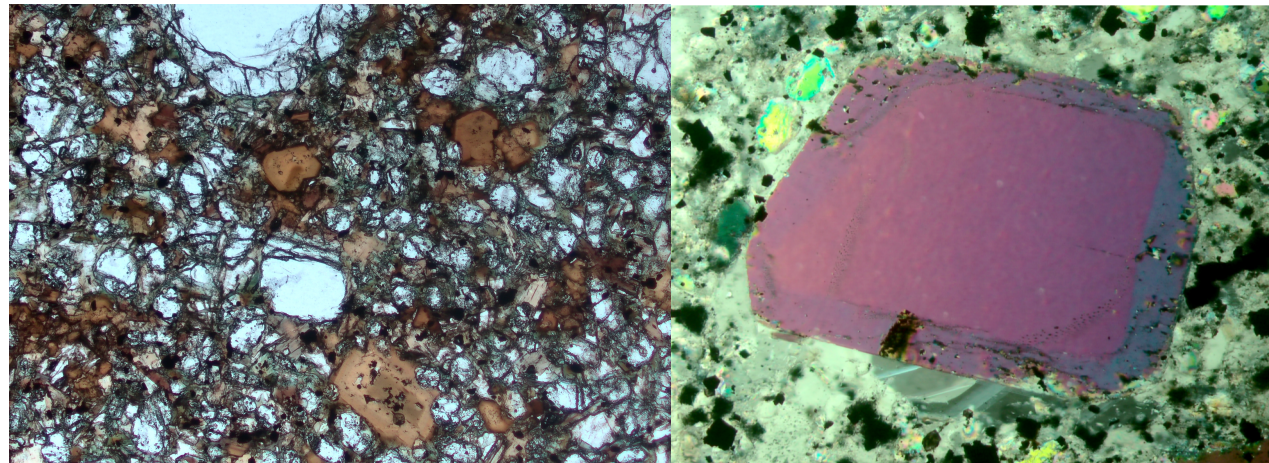


# The interaction between kimberlite melts and the Siberian sub-cratonic lithosphere

**Casetta Federico<sup>1</sup>**

Asenbaum R.<sup>1</sup>, Ageeva O.<sup>1</sup>, Abart R.<sup>1</sup>, Ntaflou T.<sup>1</sup>, Aschepkov I.<sup>2</sup>



<sup>1</sup>University of Vienna, Department für Lithosphärenforschung, UZA II, Vienna, Austria

<sup>2</sup>Institute of Geology and Mineralogy SB RAS, Geology, Novosibirsk, Russian Federation

[federico.casetta@univie.ac.at](mailto:federico.casetta@univie.ac.at)