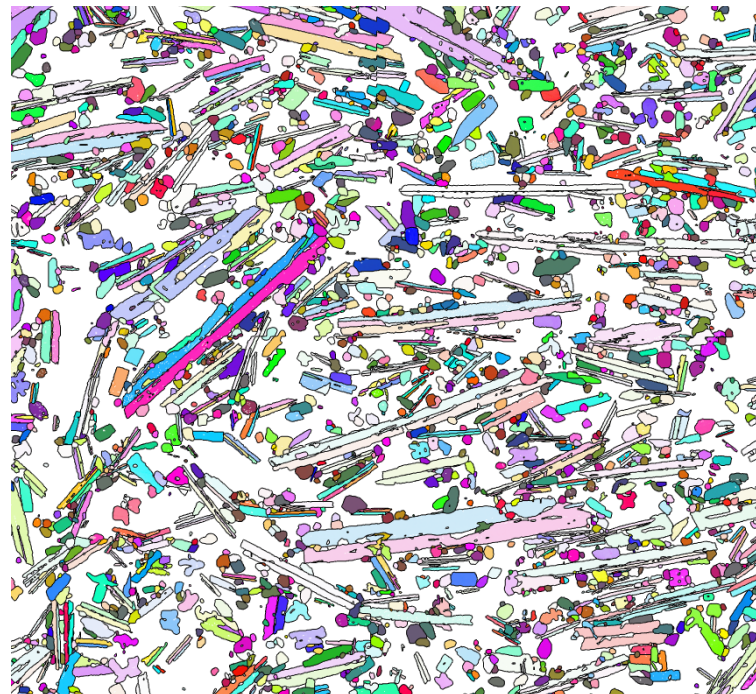
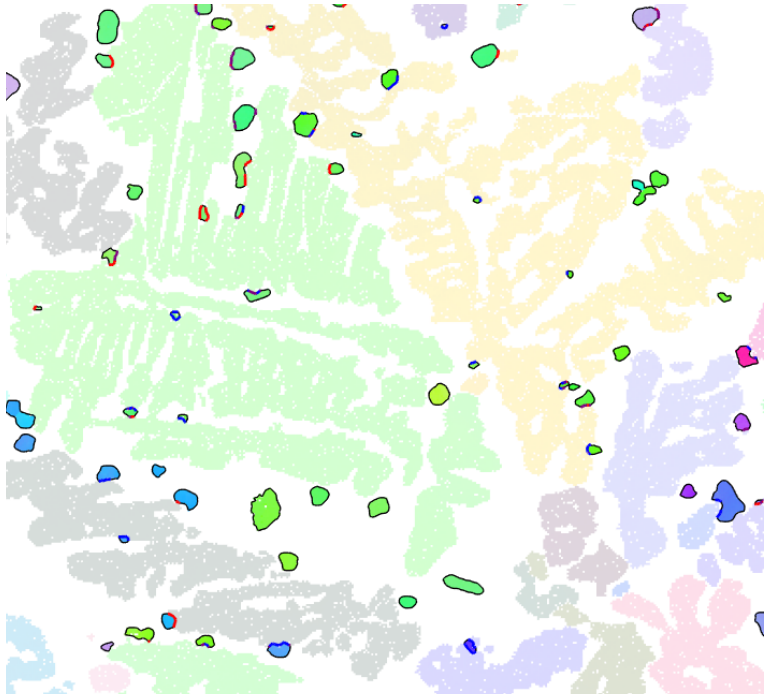


# Crystallographic orientation mapping in magmatic petrology: New insights into crystal clustering

Pisa, 22.9.2022



**FWF** Der Wissenschaftsfonds.  
funding by the Austrian Science  
Fund (FWF): P 33227-N



universität  
wien

**Thomas Griffiths<sup>1</sup>, Stefano Peres<sup>1</sup>, Gerlinde Habler<sup>1</sup>, Alessandro Musu<sup>2</sup>, Alessio Pontesilli<sup>3</sup>, Matteo Masotta<sup>4</sup>**

<sup>1</sup> Department for Lithospheric Research, University of Vienna, Vienna, Austria)

<sup>2</sup> Department of Earth Sciences, University of Geneva, Switzerland

<sup>3</sup> Istituto Nazionale di Geofisica e Vulcanologia, Rome, Italy

<sup>4</sup> Dipartimento di Scienze della Terra, University of Pisa, Pisa, Italy